



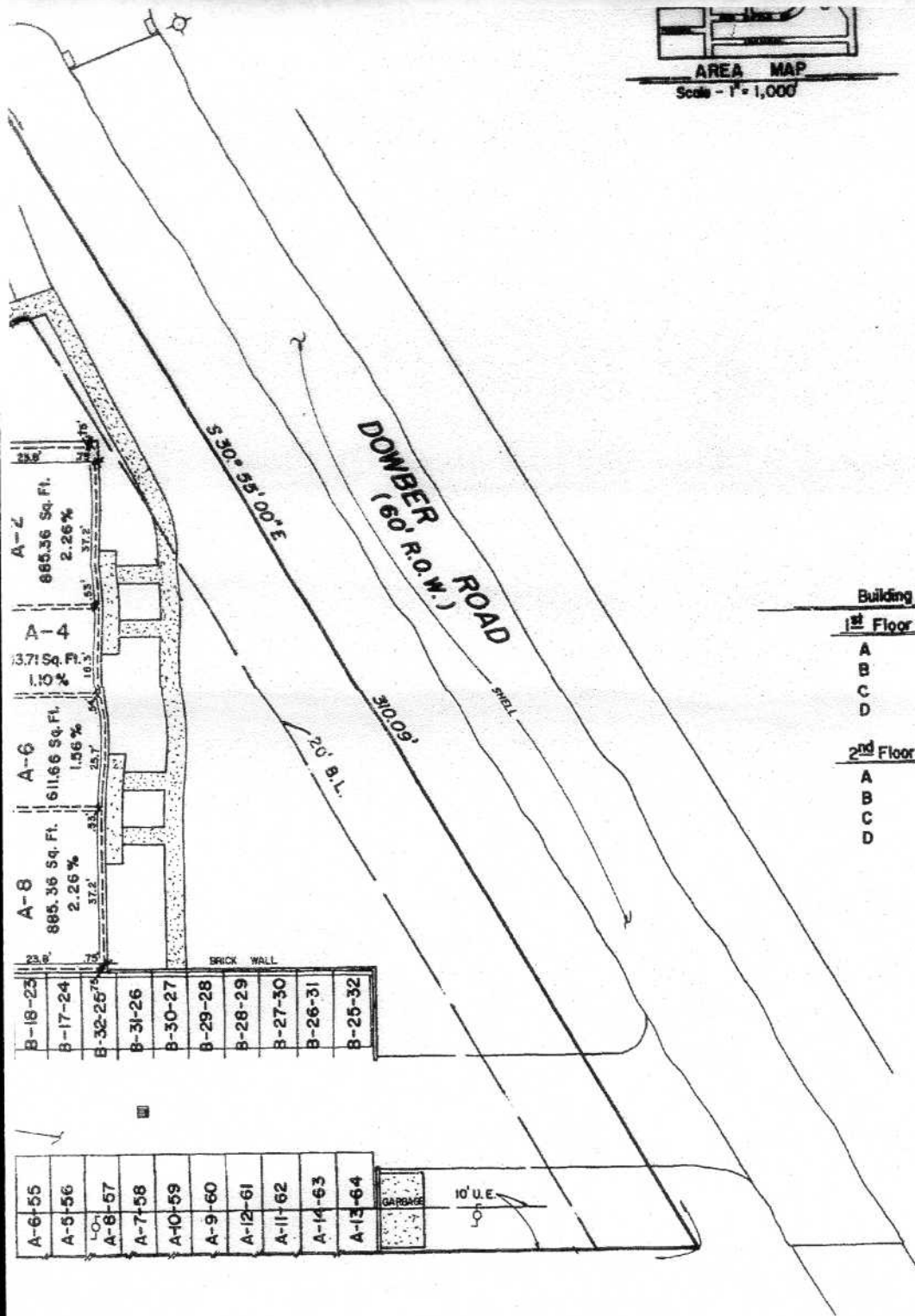


LEGEND

-  Fire Hydrant
-  Power Pole
-  Wood Fence
-  Grate Inlet
- F.F.E. Finished Floor Elev.
- F.C.E. Finished Ceiling Elev.
- B.L. Building Line
- U.E. Utility Easement



Building No.	F.F.E.	F.C.E.
1st Floor		
A	77.87	85.87
B	77.87	85.87
C	78.07	86.07
D	77.96	85.96
2nd Floor		
A	87.06	95.06
B	87.06	95.06
C	87.26	95.26
D	87.15	95.15
TOTAL SQ. FT = 39,254.64		

THE ROSE TREE
 A CONDOMINIUM PROJECT
 CONDOMINIUM RECORDS
 HARRIS COUNTY, TEXAS
 VOL. 70 PAGE 107

SITE PLAN

Thomas H. Emel

THOMAS H. EMEL
 Consulting
 3346 WEST GREENE
 HOUSTON, TEXAS 77057

AS BUILT SURV OF

ROSE TREE COND

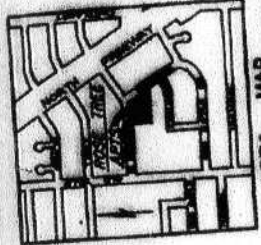
BEING ALL OF LOTS 7, 8,
 IN BLOCK 1 OF WILDROS
 AS RECORDED IN VOL. 30,
 OF THE MAP RECORDS
 COUNTY, TEXAS

Designed:	Job No.
Drawn: DE ANGELO	Approved:
Date: NOV. 1977	



BENCH MARKELEV. 10.31

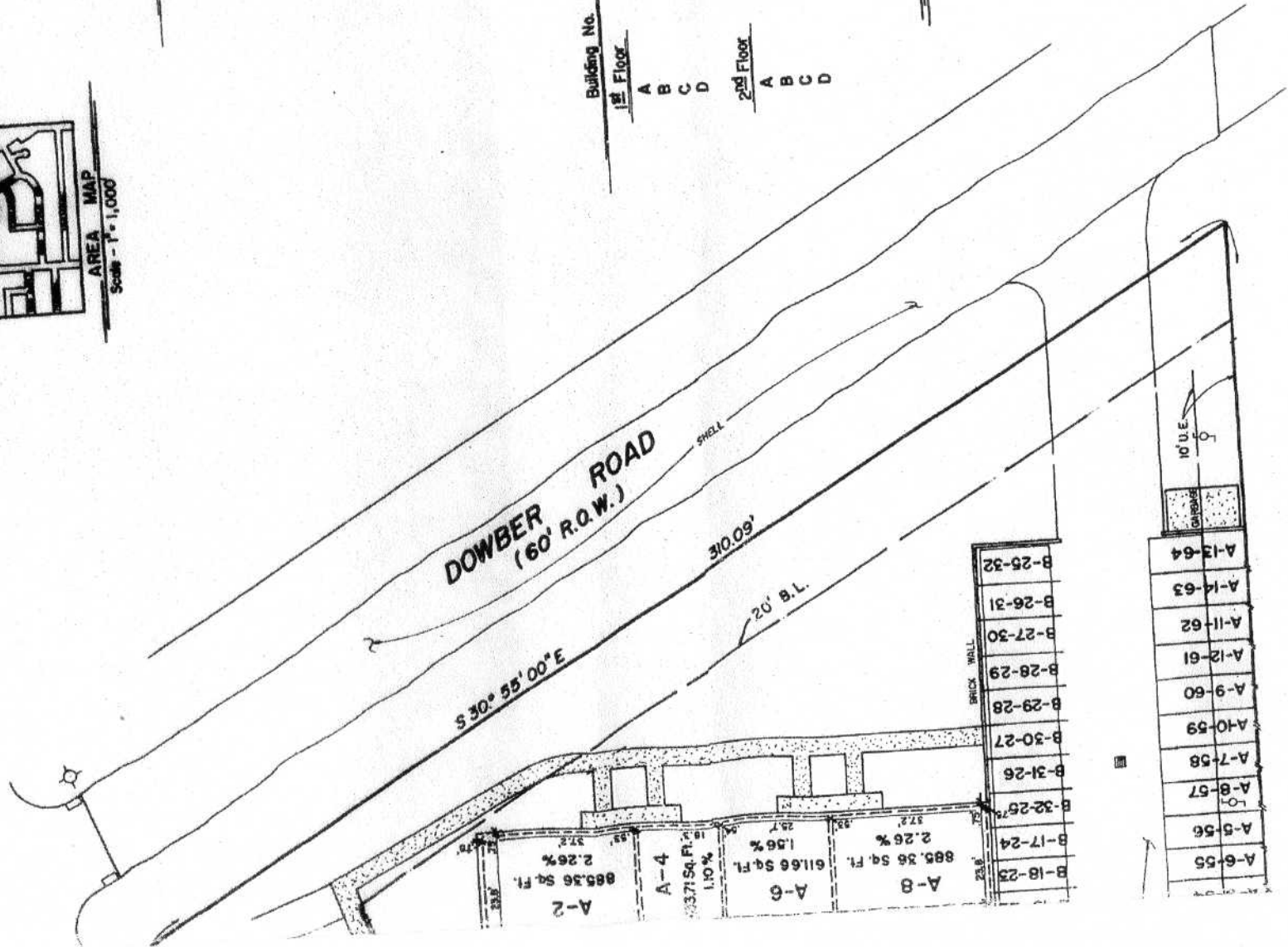
City of Houston Survey Marker 3361-0206 located at the east intersection of Yale & Red Ripple.



AREA MAP
Scale - 1" = 1,000'

LEGEND

- Fire Hydrant
- Power Pole
- Wood Fence
- Grate Inlet
- Finished Floor Elev.
- Finished Ceiling Elev.
- Building Line
- Utility Easement



Building No.	F.F.E.	F.C.E.
1st Floor		
A	77.87	85.87
B	77.87	85.87
C	78.07	85.07
D	77.96	85.96
2nd Floor		
A	87.06	95.06
B	87.06	95.06
C	87.26	95.26
D	87.15	95.15

TOTAL SQ. FT. = 39,254.64

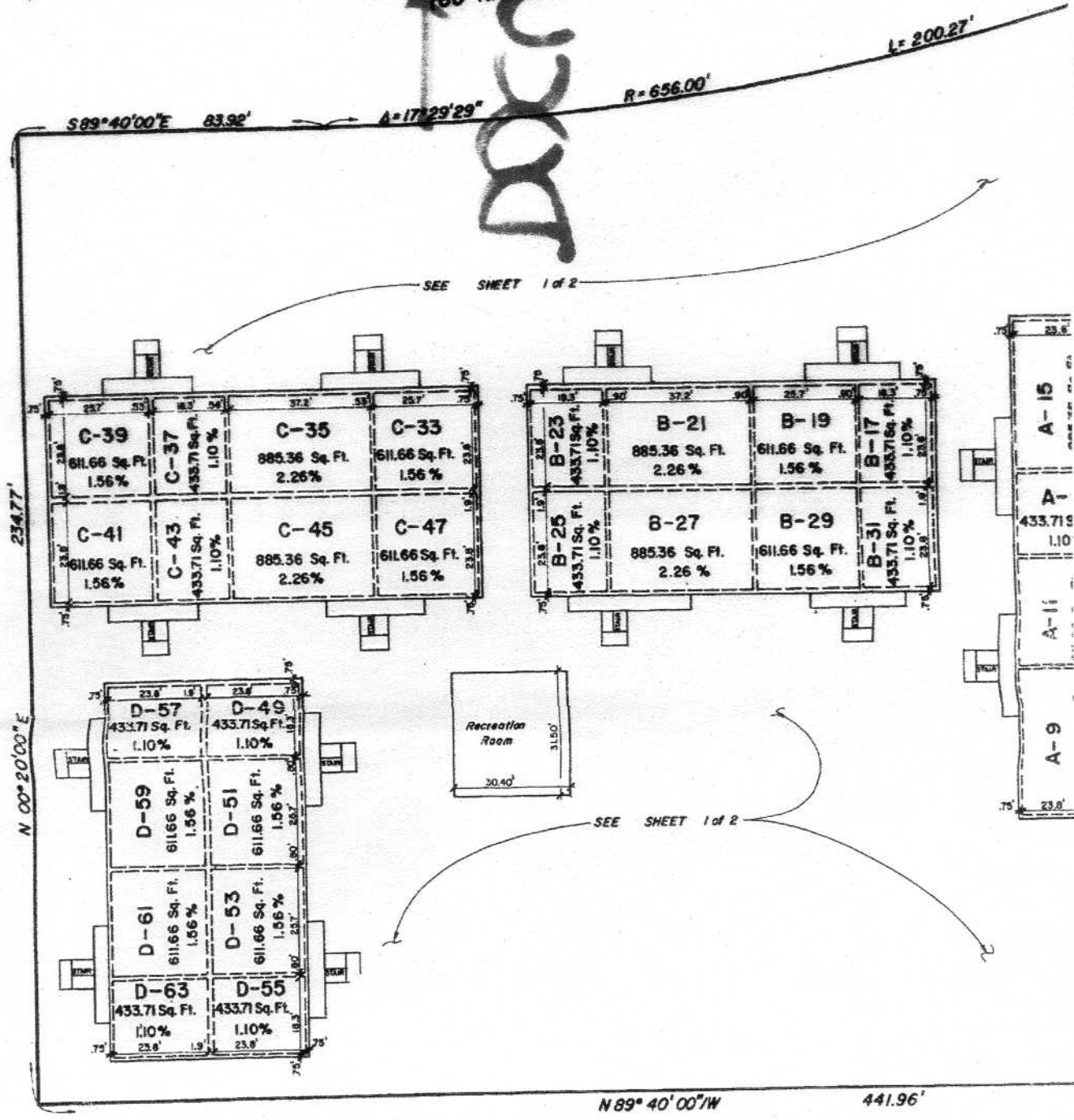
B-18-23	A-6-55
B-17-24	A-5-56
B-32-25	A-8-57
B-31-26	A-7-58
B-30-27	A-10-59
B-29-28	A-9-60
B-28-29	A-12-61
B-27-30	A-11-62
B-26-31	A-14-63
B-25-32	A-13-64

THE ROSE TREE
A CONDOMINIUM PROJECT
CONDOMINIUM RECORDS
HARRIS COUNTY, TEXAS

TH CO 3448 HOUR AS
ROSE TREE

Shirley N. Eick

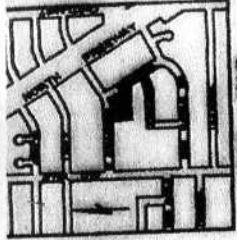
ROSAMOND
 (60' R.O.W.)



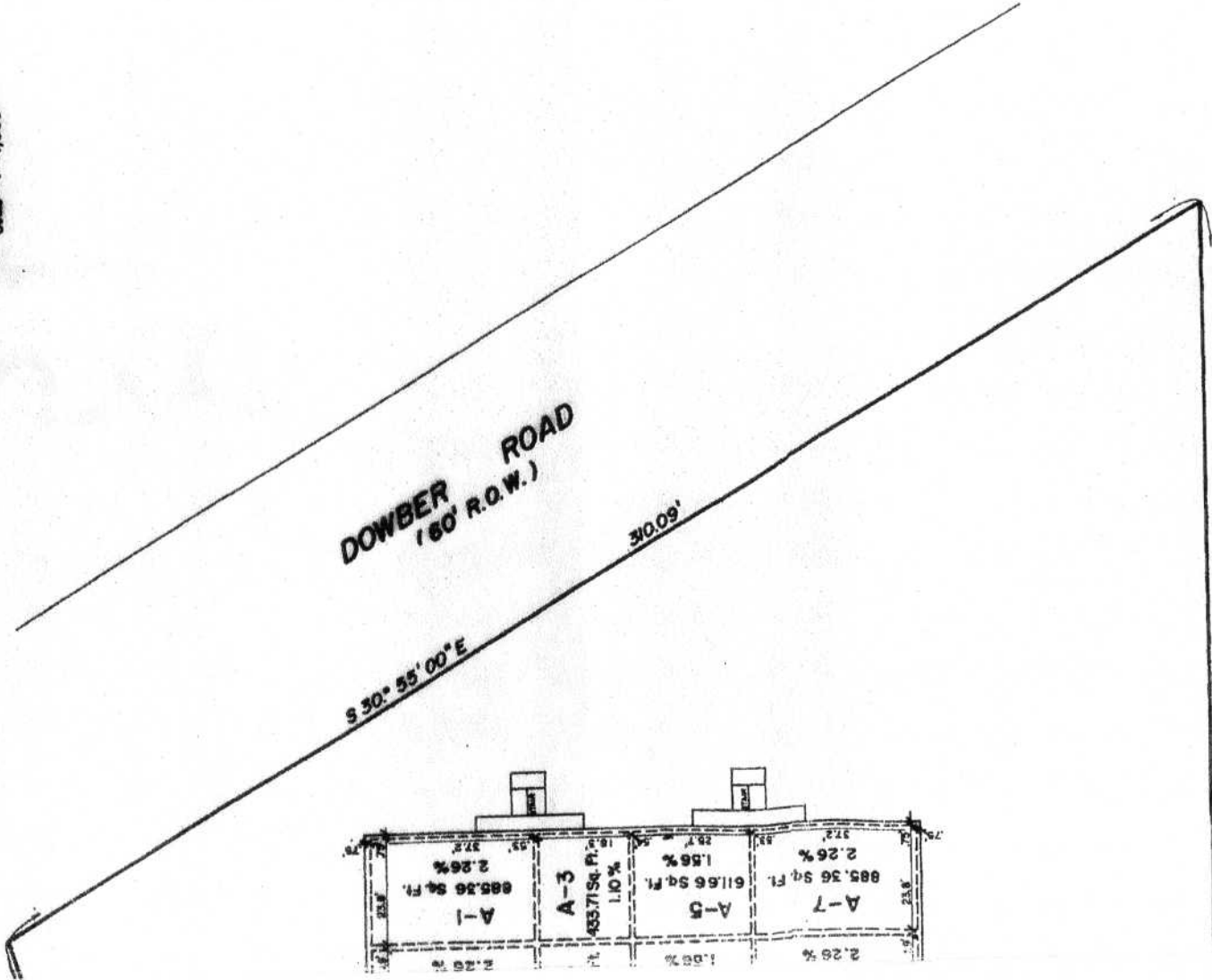
THE ROSE TREE
 A CONDOMINIUM PROJECT
 CONDOMINIUM RECORDS
 HARRIS COUNTY, TEXAS
 VOL. 70 PAGE 108

DELIVERED TO THE CITY

City of Houston Survey Marker 5361-0208 located at the east intersection of Yalis & Red Ripple.



AREA MAP
Scale - 1" = 1,000'



A-1	A-3	A-5	A-7
885.26 Sq. Ft.	435.71 Sq. Ft.	611.66 Sq. Ft.	885.26 Sq. Ft.
2.26%	1.10%	1.88%	2.26%

STATE OF TEXAS
COUNTY OF HARRIS

I hereby certify that this instrument was FILED in File Number Sequence on the date and at the time stamped hereon by me and was duly RECORDED, in the Official Public Records of Real Property of Harris County, Texas on

JUN 1 1978

James N. Eick



**ROSAMOND
(60' R.O.W.)**

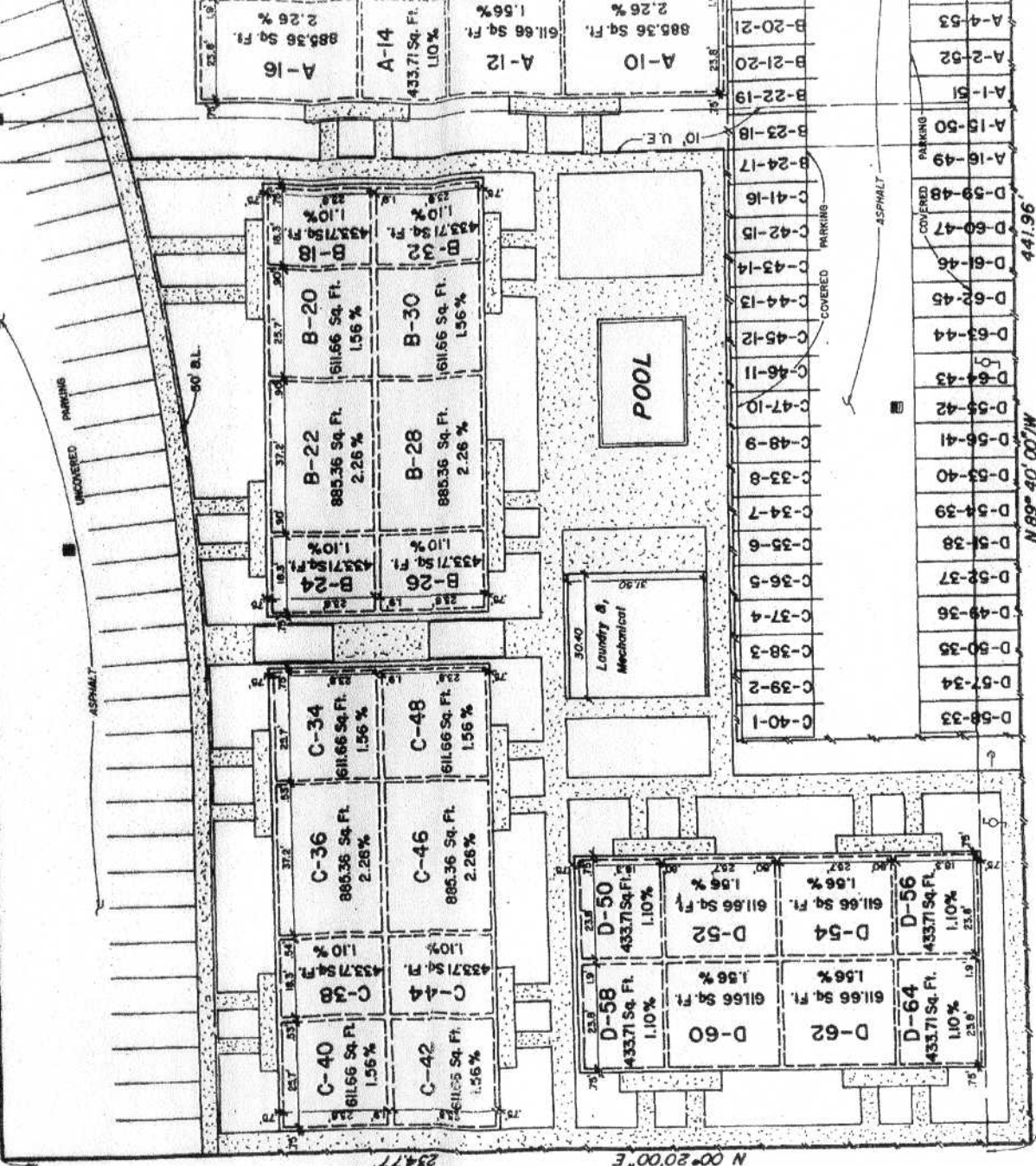
ASPHALT

S 89° 40' 00" E 83.92'

A = 17° 29' 29"

R = 656.00'

L = 200.27'



A-10 885.36 Sq. Ft. 2.26%
A-12 611.66 Sq. Ft. 1.56%
A-14 433.71 Sq. Ft. 1.10%
A-16 885.36 Sq. Ft. 2.26%

B-20 611.66 Sq. Ft. 1.56%
B-22 885.36 Sq. Ft. 2.26%
B-24 433.71 Sq. Ft. 1.10%
B-26 433.71 Sq. Ft. 1.10%
B-28 885.36 Sq. Ft. 2.26%
B-30 611.66 Sq. Ft. 1.56%

C-20 433.71 Sq. Ft. 1.10%
C-22 433.71 Sq. Ft. 1.10%
C-24 433.71 Sq. Ft. 1.10%
C-26 433.71 Sq. Ft. 1.10%
C-28 433.71 Sq. Ft. 1.10%
C-30 433.71 Sq. Ft. 1.10%
C-32 433.71 Sq. Ft. 1.10%
C-34 433.71 Sq. Ft. 1.10%
C-36 885.36 Sq. Ft. 2.26%
C-38 885.36 Sq. Ft. 2.26%
C-40 611.66 Sq. Ft. 1.56%
C-42 611.66 Sq. Ft. 1.56%
C-44 433.71 Sq. Ft. 1.10%
C-46 885.36 Sq. Ft. 2.26%
C-48 611.66 Sq. Ft. 1.56%

D-20 433.71 Sq. Ft. 1.10%
D-22 433.71 Sq. Ft. 1.10%
D-24 433.71 Sq. Ft. 1.10%
D-26 433.71 Sq. Ft. 1.10%
D-28 433.71 Sq. Ft. 1.10%
D-30 433.71 Sq. Ft. 1.10%
D-32 433.71 Sq. Ft. 1.10%
D-34 433.71 Sq. Ft. 1.10%
D-36 433.71 Sq. Ft. 1.10%
D-38 433.71 Sq. Ft. 1.10%
D-40 433.71 Sq. Ft. 1.10%
D-42 433.71 Sq. Ft. 1.10%
D-44 433.71 Sq. Ft. 1.10%
D-46 433.71 Sq. Ft. 1.10%
D-48 433.71 Sq. Ft. 1.10%
D-50 433.71 Sq. Ft. 1.10%
D-52 433.71 Sq. Ft. 1.10%
D-54 433.71 Sq. Ft. 1.10%
D-56 433.71 Sq. Ft. 1.10%
D-58 433.71 Sq. Ft. 1.10%
D-60 611.66 Sq. Ft. 1.56%
D-62 611.66 Sq. Ft. 1.56%
D-64 433.71 Sq. Ft. 1.10%

POOL

30-40
Laundry &
Mechanical

B-20-21 885.36 Sq. Ft. 2.26%
B-21-20 885.36 Sq. Ft. 2.26%
B-22-19 885.36 Sq. Ft. 2.26%
B-23-18 885.36 Sq. Ft. 2.26%
B-24-17 885.36 Sq. Ft. 2.26%
C-41-16 885.36 Sq. Ft. 2.26%
C-42-15 885.36 Sq. Ft. 2.26%
C-43-14 885.36 Sq. Ft. 2.26%
C-44-13 885.36 Sq. Ft. 2.26%
C-45-12 885.36 Sq. Ft. 2.26%
C-46-11 885.36 Sq. Ft. 2.26%
C-47-10 885.36 Sq. Ft. 2.26%
C-48-9 885.36 Sq. Ft. 2.26%
C-33-8 885.36 Sq. Ft. 2.26%
C-34-7 885.36 Sq. Ft. 2.26%
C-35-6 885.36 Sq. Ft. 2.26%
C-36-5 885.36 Sq. Ft. 2.26%
C-37-4 885.36 Sq. Ft. 2.26%
C-38-3 885.36 Sq. Ft. 2.26%
C-39-2 885.36 Sq. Ft. 2.26%
C-40-1 885.36 Sq. Ft. 2.26%

A-1-51 885.36 Sq. Ft. 2.26%
A-15-50 885.36 Sq. Ft. 2.26%
A-16-49 885.36 Sq. Ft. 2.26%
D-59-48 885.36 Sq. Ft. 2.26%
D-60-47 885.36 Sq. Ft. 2.26%
D-61-46 885.36 Sq. Ft. 2.26%
D-62-45 885.36 Sq. Ft. 2.26%
D-63-44 885.36 Sq. Ft. 2.26%
D-64-43 885.36 Sq. Ft. 2.26%
D-55-42 885.36 Sq. Ft. 2.26%
D-56-41 885.36 Sq. Ft. 2.26%
D-53-40 885.36 Sq. Ft. 2.26%
D-54-39 885.36 Sq. Ft. 2.26%
D-51-38 885.36 Sq. Ft. 2.26%
D-52-37 885.36 Sq. Ft. 2.26%
D-49-36 885.36 Sq. Ft. 2.26%
D-50-35 885.36 Sq. Ft. 2.26%
D-57-34 885.36 Sq. Ft. 2.26%
D-58-33 885.36 Sq. Ft. 2.26%

N 00° 20' 00" E

254.77'

441.96'

N 89° 40' 00" W

FIRST FLOOR